

Proprietors: C. J. Stewart & Co. (Engineers), Ltd.

**100, BELSIZE LANE, LONDON, N.W.3.**

*Telephones:*

**HAMPSTEAD 8231-8232.**

*Telegrams:*

**Inland: METAMET, HAVER, LONDON.**

**Foreign: METAMET, LONDON.**

METAMET present to you the widest range of light **FOUR-WHEEL DRIVE** vehicles, powered by the famous Jeep engine (2194 ccm. - 15.9 h.p.). Half a million such engines stood up to war-time conditions in tropical heat, desert dust, jungle dampness, and arctic cold.

The **FOUR-WHEEL DRIVE** enables you to negotiate any gradient and any mud, whilst the body, specially built by METAMET to your requirements, gives you maximum comfort and will carry the load. The eight gears enable you to drive from 3 to 60 m.p.h. METAMET tune the engines to run 20 m.p.g., a very low consumption for a  $2\frac{1}{4}$  litre car.

Every one of these vehicles has been carefully assembled in METAMET'S Works. METAMET'S high-class workmanship is the result of many years of intensive work, experience and experiments. All components are subjected to a strict test, and the smallest defect is rectified, as per following specification.

## SPECIFICATION.

### Engine:

Block: rebored.  
Piston, rings, gudgeon pins: new.  
Valves, guides, springs: new.  
Tappets: new.  
Crankshaft: reground.  
Bearings, main and conrod: new shells.  
Chain, timing: new.  
Gaskets and packings: all new.  
Flywheel: refaced.  
Ring, gear: new.  
Pump, oil: reconditioned.  
Filter, oil: new element.  
Clutch: new linings, completely reconditioned.  
Carburettor: completely reconditioned.  
Pump, fuel: completely reconditioned.  
Tank: checked and cleaned.  
Pump, water: reconditioned, new packings.

### Electrical Items:

Dynamo completely reconditioned,  
Distributor: using new parts such as  
bearings, sleeves, breakers,  
Starter: points, condensers, etc.  
Lamps: new.  
Battery: new, extra heavy duty.  
Horn: new.  
Wiring: replaced.

### Transmission, Gear Box, Transfer Case:

Gears: new.

Shafts: new.

Oil seals and packings: new, assembled and bench tested.

Propeller shafts: checked for eccentricity.

### Axles:

Gears: new.

Bearings: new.

Oil seals and packings: new.

### Brakes:

Linings: new.

Caps and cups: new.

Drums: skimmed.

### Steering:

Bushes: new, assembled and bench tested.

Shaft: new.

### Springs and Shackles:

Springs: recambered.

Shackles: new.

Bushes: new.

Absorbers, shock: new.

### Hood and Frame and Bodywork:

Hoods: in new heavy canvas twill.

Wood: only thoroughly seasoned wood of the most suitable type is used for bodywork. All exposed surfaces of the woodwork are covered with weather resistant lacquer, or treated with fungicide if unseen to the eye.

Glass: safety, movable panes in toughened glass.

## THE STANDARD MODEL.

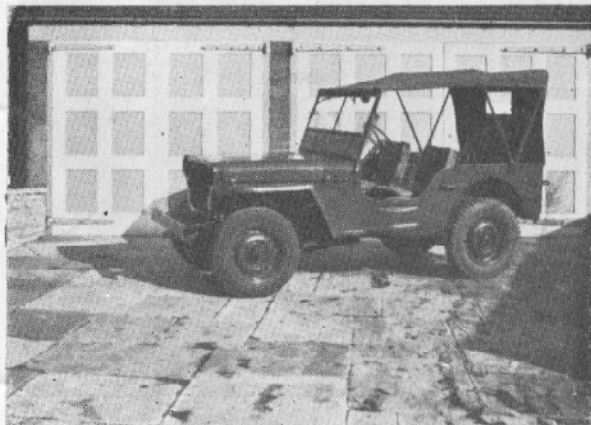
The Standard Model Jeep needs no introduction to ex-Servicemen who invariably have a strong affection for its versatility. We feel, however, that a brief description of this unique vehicle may be of interest to all. The following specifications apply to all the conversions for which 'Metamet' are famous.

The power unit is a robust four cylinder side valve engine of 2194 c.c. developing 60 b.h.p. at 3600 revs. The mechanical petrol pump delivers to a 'Carter' down-draught carburettor which gives a 20 m.p.g. consumption. (Any jeep consuming more needs tuning).

The drive is transmitted through a single dry-plate Borg and Beck clutch, to a sturdy gearbox giving one reverse and three forward gears (2 syncromeshed).

A transfer box enables you to double the gear range by giving a low booster range of gears which, when four wheel drive is selected, gives the Jeep that unique traction that takes you through loose sand, deep mud, snow and ice. There is thus no possibility of wheelspin when towing or carrying a heavy load over rough ground.

We can supply the completely re-built standard model with detachable doors and side screens optional.



*Metamet reserve the right to change prices and alter specifications without notice.*



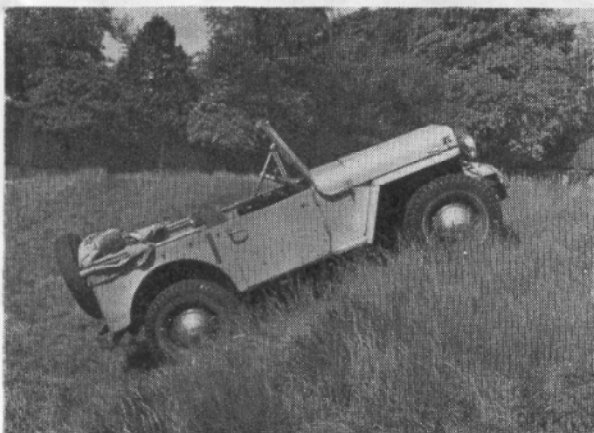
Any Ground, Any Gradient



Hood up, sides removed



Completely enclosed



Completely open

## THE FIVE IN ONE MODEL.

Of the many conversions we produce, we are especially proud of our 'Five in One' model. Our photograph shows the first 'Five in One' built by us in early 1947 and still the pride of its owner. The ingenious Metamet hinged hood enables you to convert the vehicle to an open tourer, an enclosed drop head coupé, a weatherproof sports cabriolet, or to any of the 5 intermediate types in a matter of seconds.

Also fitted with a comfortable bench type front seat capable of carrying three people, steel frame type side screens that are instantly detachable, full size steel doors fitted with locks to safeguard the contents of the vehicle when the hood and side screens are up.

An ideal vehicle for the countryman, sportsman and caravanner.

*Metamet reserve the right to change prices and alter specifications without notice.*

## GENERAL INFORMATION

**TRAILERS.**—We stock 2-wheel trailers both of the genuine Jeep type and the “airborne” type, and we can build any type of trailer to your specification.

**SPARES.**—We carry in stock all spares for our vehicles and all equipment and materials for running use and repairs. Any item you want will be sent on receipt of your telephone call or wire.

We also run an exchange service for such items as engines, gear boxes, axles, electrical units, giving you a high allowance for your old unit.

Ask for our “Spares Price List”.

**EQUIPMENT.**—All our vehicles are equipped at no extra cost with a spare wheel and five new or retread tyres, wheel-wrench, driving mirror, windscreen wiper, crank-handle and jack. Special comprehensive kits of tools are available at a reasonable price.

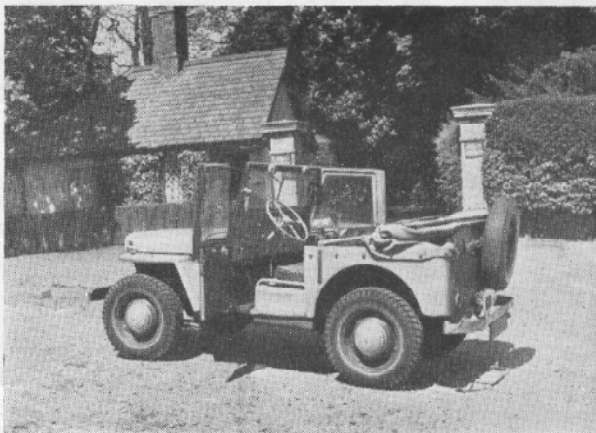
Such extras as chromium-plated bumpers, polished wheelcaps, ashtrays, etc., are available at very reasonable prices.

We also run a “spares for foreign travel” service.

**CROSS-COUNTRY TYRE SERVICE.**—We can supply you with any type of brand new cross-country tyres. Alternatively we place at your service our speedy retread service (see special leaflet).

**GUARANTEE.**—A six months’ full written guarantee is given with every vehicle.

**INSPECTION.**—We shall be glad to demonstrate our vehicles to you personally. Should you not be able to call, we can send the vehicle to you, but it is better if you come and see all our range. In any case, before you buy any vehicles, have them inspected by an expert and exacting inspector (like the A.A. or R.A.C.). This will prevent your buying a vehicle which might appear to be good and which unexpectedly can cause you much disappointment and unpleasantly high repair bills.



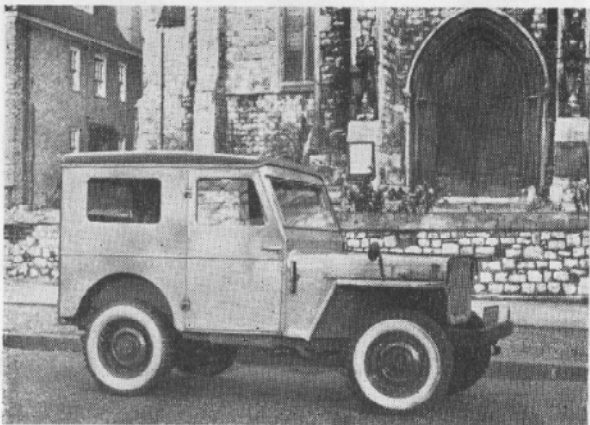
Hood down, sides up.



Put to its proper use



Sunshine roof



## THE SALOON MODEL.

For the person who appreciates the comfort of the saloon car, combined with the advantages of the Jeep, we offer our Saloon Model. Fitted with a permanent or detachable metal body, this model becomes weatherproof 'par-excellence.'

The body exterior is of sheet metal construction which is especially appreciated when the vehicle has to stand out in the open all the year round.

An optional drop down tailboard gives easy access for loading and full size doors add greatly to the comfort.

We have produced many specialised variations of this model and should be pleased to quote for your particular requirements.

---

## THE DE-LUXE MODEL.

The De-luxe Model is in fact a Standard Model with all its technical advantages plus the "Metamet" hood (for illustrations of this hood see the 5 in 1 Model).

In addition to enabling the driver to raise or lower the hood, single handed, in less than a minute, the 'Metamet' hinged hood frame gives the vehicle complete weather protection and far more attractive lines.

Fitted with detachable doors made of

stout twill on steel frames and a comfortable 'Metamet' bench type front seat capable of accommodating three passengers, the De-Luxe model becomes a weather-proof 'get you anywhere' run-about.

Should you already possess a Standard model Jeep, why not let us convert it to a 'De-Luxe' model by fitting the ingenious 'Metamet' hinged hood and detachable doors?