

THE SALOON MODEL.

For the person who appreciates the comfort of the saloon car, combined with the advantages of the Jeep, we offer our Saloon Model. Fitted with a permanent or detachable metal body, this model becomes weatherproof 'par-excellence.'

The body exterior is of sheet metal construction which is especially appreciated when the vehicle has to stand out in the open all the year round.

An optional drop down tailboard gives easy access for loading and full size doors add greatly to the comfort.

We have produced many specialised variations of this model and should be pleased to quote for your particular requirements.

THE DE-LUXE MODEL.

The De-luxe Model is in fact a Standard Model with all its technical advantages plus the "Metamet" hood (for illustrations of this hood see the 5 in 1 Model).

In addition to enabling the driver to raise or lower the hood, single handed, in less than a minute, the 'Metamet' hinged hood frame gives the vehicle complete weather protection and far more attractive lines.

Fitted with detachable doors made of

stout twill on steel frames and a comfortable 'Metamet' bench type front seat capable of accommodating three passengers, the De-Luxe model becomes a weather-proof 'get you anywhere' run-about.

Should you already possess a Standard model Jeep, why not let us convert it to a 'De-Luxe' model by fitting the ingenious 'Metamet' hinged hood and detachable doors?

THE FARMER MODEL.

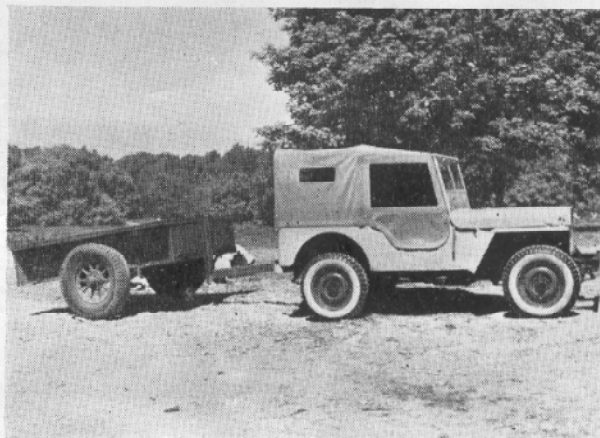
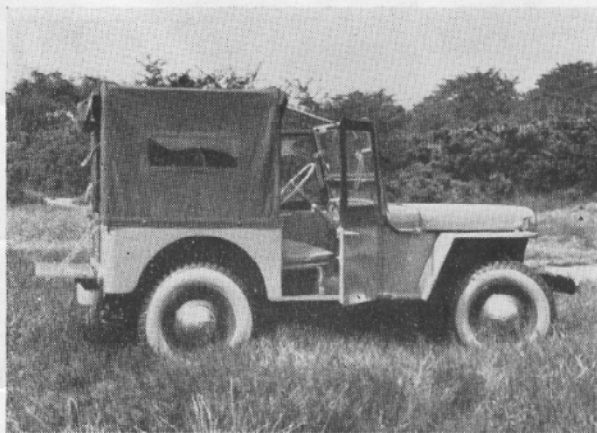
This model has proved to be the ideal vehicle for farmers. The experience we have gained in satisfying the demands of this specialised section of the community has enabled us to produce a vehicle which has a hundred-and-one uses in agriculture.

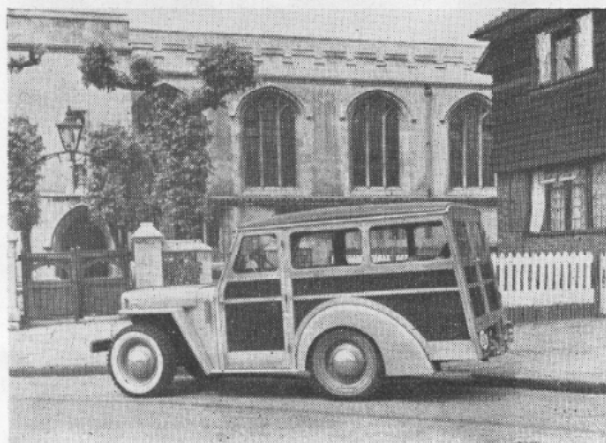
Let us briefly mention the drop-down tailboard giving easy access for loading; the twill hoop type top which may be instantly removed completely i.e. canvas and hoops; the out of the way spare wheel mounting above the left side rear wheel arch; the optional extra power take-off giving you a highly mobile power unit; or adaption for carrying milk churns at rear.

We shall be pleased to discuss and to quote for any specialised equipment you may require fitted to this or any other model according to your requirements.

Usually we equip the "Farmer" model with detachable twill doors on steel rod frames, as shown on middle photograph (same as on de-luxe model). We can, however, fit steel doors with inserted twill upper part as shown on top and bottom illustration (same as on the "Five in One" model).

Metamet reserve the right to change prices and alter specifications without notice.





THE SHOOTING BRAKE.

We have no hesitation in claiming this vehicle to be the most versatile shooting brake on the market thanks to its four wheel drive. The body is constructed of thoroughly seasoned wood and in order to gain maximum strength, the number of joints are kept to a minimum by using carefully bent and shaped timbers. The unseen areas are treated with fungicide whilst the remainder is given three coats of weather resistant varnish on a special impregnating base.

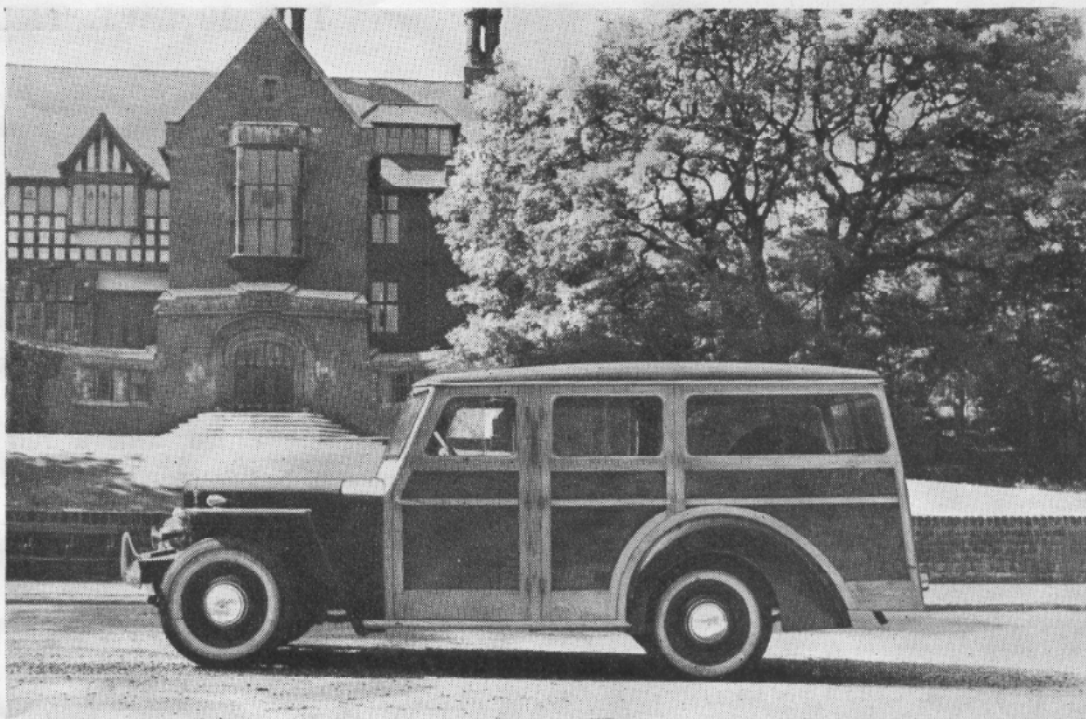
The fully opening drop-down back enables loading to be carried out easily, whilst two full size doors give access to the bench type seat.

The shooting brake body provides room for five people, together with good luggage room at the back, available because the spare wheel is carried out of the way on an underslung carrier.

Particularly suitable for sports, fishing, shooting, etc.

Metamet reserve the right to change prices and alter specifications without notice.





THE STATION WAGON.

Of all the conversions for which 'Metamet' are so well known, our Station Wagon model is the pride of our fleet. Carefully built upon the sturdy extended jeep chassis giving a 100 inch wheelbase, this vehicle can easily claim to be the only passenger car giving sufficient room and comfort with four wheel drive on the market.

Built with two or four doors, also drop down tailboard or doors at the rear according to requirements. A luxuriously appointed

spacious interior makes this vehicle ideally suitable for long journeys, especially where the going occasionally gets rough. Six opening windows permit ample ventilation, both front and back bench type seats, also room for plenty of holiday luggage at the back. The rear seat can be made to fold flat thus providing a 6 feet platform for the carriage of bulky goods or even for sleeping.

We shall be pleased to supply a more detailed description of this attractive model.