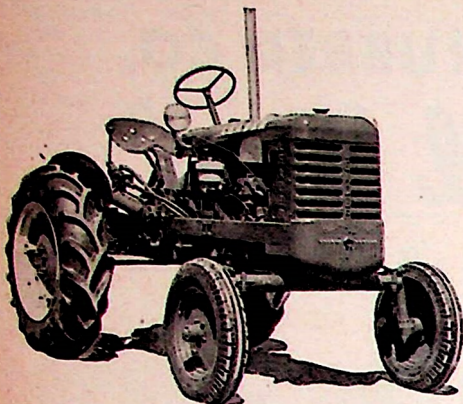


FARM IMPLEMENT NEWS

fuel tank capacity $7\frac{1}{2}$ gals.; own front and rear wheels; Timken front wheel and rear axle bearings; Timken and Fafnir transmission bearings.



Tires: 10x24 rear; 5.00x15 front.

Brakes: Two brakes located on upper axle housing, foot operated either individually or simultaneously by interlocking.

Speeds: $3\frac{1}{4}$, $5\frac{1}{4}$ and $11\frac{1}{4}$ mph; reverse 3 mph.

Shipping Weight: 2400 lbs.

Dimensions: Wheelbase 70"; height overall 61"; width overall, min. 58", max. $74\frac{1}{2}$ "; rear wheel tread, min. 48", max. $64\frac{1}{2}$ "; cultivating clearance 19"; turning radius 8' 8".

Power Take-Off: (Standard) $1\frac{1}{2}$ " ASAE standard spline shaft, 1162 rpm; spline end 24" above ground, on center line of tractor.

Pulley: (Standard) 7x7", 1162 rated rpm, 1267 governed no-load rpm; belt speed 2129 fpm.

Lubrication: Crankcase capacity 5 qts.; transmission and differential capacity $1\frac{1}{2}$ gals.; capacity each final drive housing $\frac{7}{8}$ qt.; 1 qt. added for PTO and belt pulley.

Hydraulic Lift: (Standard) B & S Model 2-S pump; 6 to 8 gpm delivery at 800 psi operating pressure; reservoir oil capacity 5 qts. Double acting cylinder; 3" inside diameter; $10\frac{1}{8}$ " piston stroke; max. piston force 800 lbs.; both push and pull variable stroke control; $17\frac{1}{8}$ " cylinder length between pin centers; pin connection on cylinder; 1" diameter attaching pin.

Le Roi Co., Centaur Div., Greenwich, Ohio
Klearview Model KV-48

Capacity: Two 14" plows.

Performance: (Neb. Tractor Test No. 402) 24.00 hp max. belt; 20.28 hp max. drawbar; max. pull 2109 lbs. at 1.91 mph. (Corrected to sea level basis) 25.04 hp max. belt; 21.38 hp max. drawbar.

Engine: Own Model D140, I-head, 4 cylinders vertical, removable cylinder sleeves, $3\frac{1}{2}$ x $3\frac{5}{8}$ "—1500 rated rpm, displacement 140 cu. in., 24 rated hp.

Service Data: Champion 18 mm spark plugs, part no. J-11; 3 rings per piston, 2 compression $\frac{1}{8}$ ", 1 oil $\frac{1}{8}$ ".

Accessories: Auto-Lite Model 1413 generator standard equip.; Globe Model 63-1034 battery standard equip.; Zenith Model 161X7 carburetor, size $\frac{7}{8}$ "; Novi flyball governor; Guide lamps optional equip.; Vortex Model EXG45X air cleaner; Purolator Model 35026 oil filter, cartridge no. 33918; Rockford 2-piece clutch, part no. CLA-1213-16; Harrison cellular radiator core, capacity 11 qts.; Dole variable thermostat optional equip.; fuel tank capacity 12 gals.; Motor Wheel front and rear wheels; Timken front wheel, rear axle and transmission bearings.

Tires: Standard—9x24 4-ply rear; 5.00x15

4-ply front. Oversize—10x24 4-ply rear; 6.00x16 4-ply front.

Brakes: Two brakes located on differential shaft, hand operated individually.

Speeds: 2.4, 4.5, 7.4 and 15.9 mph; reverse 1.9 mph.

Shipping Weight: 2824 lbs.

Dimensions: Wheelbase 60.5"; height overall 53"; width overall, min. 58", max. 70"; rear wheel tread, min. 48", max. 60"; cultivating clearance 13" with standard tires or $13\frac{1}{2}$ " with oversize tires; turning radius 9' 3".

Power Take-Off: (Optional) $1\frac{1}{2}$ " ASAE 6-spline shaft, 586 rpm; spline end 13 to $26\frac{1}{2}$ " above ground, 9" right of center line of tractor and $2\frac{1}{2}$ " ahead of hitch point.

Pulley: (Optional) 6x6 $\frac{1}{4}$ ", 1500 rated rpm; belt speed 2756 fpm.

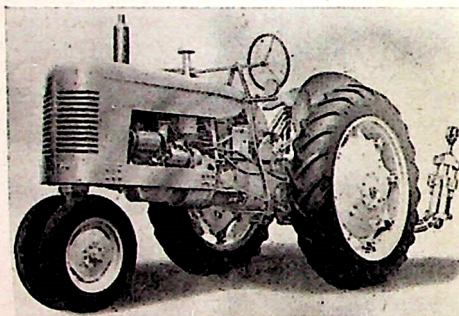
Lubrication: Crankcase capacity $4\frac{1}{2}$ qts.; transmission case capacity $1\frac{1}{2}$ gals.; capacity each final drive housing $\frac{3}{4}$ qt.

Hydraulic Lift: (Optional) Hydrec Model 5-PVT-42 pump; 10 gpm delivery at 1000 psi operating pressure; reservoir oil capacity 4 qts. Single acting cylinder; inside diameter $2\frac{1}{2}$ "; piston stroke 5"; max. piston force 3141 lbs.; pull type variable stroke control; $11\frac{5}{8}$ " cylinder length between pin centers; mounted end connection on cylinder; $\frac{3}{4}$ " diameter attaching pin.

Long Mfg. Co., Inc., Tarboro, N. Car.

Long Model "A"

(1949 specifications)



Capacity: Two 14" plows.

Performance: Not yet tested at Nebraska.

Engine: Continental Model F162, L-head, 4 cylinders vertical, $3\frac{1}{8}$ x $4\frac{3}{8}$ "—1500 rpm, displacement 162 cu. in., 33.8 rated hp.

Service Data: 18 mm spark plugs; 4 rings per piston, 3 compression $\frac{1}{8}$ ", 1 oil $\frac{1}{4}$ ".

Accessories: Auto-Lite generator standard equip.; Exide battery standard equip.; Marvel-Schebler carburetor, size 1"; Novi governor; United air cleaner; Fram oil filter; Rockford clutch; Modine radiator core, capacity 2 $\frac{1}{2}$ gals.; Dole thermostat standard equip.; Motor Wheel front and rear wheels; Timken front wheel, rear axle and transmission bearings.

Tires: 11x38 rear; 5.50x16 front.

Brakes: Two brakes located on differential countershaft, foot operated either individually or simultaneously by interlocking.

Speeds: 2.46, 3.54, 4.92 and 9.75 mph; reverse 3.06 mph.

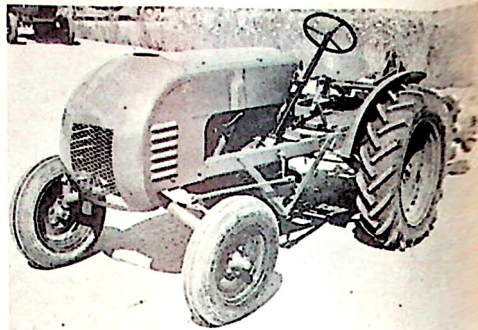
Shipping Weight: 3375 lbs.

Dimensions: Wheelbase 81 $\frac{1}{2}$ "; height overall 75"; width overall, min. $74\frac{1}{2}$ ", max. $94\frac{1}{2}$ "; rear wheel tread, min. 56", max. 84"; cultivating clearance 25"; turning radius 8' 10".

Power Take-Off: (Standard) $1\frac{1}{2}$ " spline shaft, 532 rpm at 1500 engine rpm; spline end $25\frac{1}{2}$ " above ground, on center line of tractor and 18 $\frac{1}{2}$ " ahead of hitch point.

Pulley: (Optional) 8" diameter, 1227 rpm; belt speed 2576 fpm.

Love Tractor, Inc., Eau Claire, Mich.
Love Model J-51



Capacity: Two 14" plows.

Performance: Not yet tested at Nebraska. Engine: Jeep Model 1949, L-head, 4 cylinders vertical, $3\frac{1}{8}$ x $4\frac{3}{8}$ "—2000 rated rpm, displacement 134.2 cu. in.

Service Data: Champion spark plugs.

Accessories: Auto-Lite generator standard equip.; National battery standard equip.; Carter carburetor; Pierce governor; Jeep air cleaner; Fram oil filter; Borg & Beck 2-piece clutch; cooling system capacity 11 qts.; thermostat standard equip.; fuel tank capacity $8\frac{1}{2}$ gals.; Motor Wheel front wheels; own rear wheels; Timken front wheel and rear axle bearings.

Tires: 10x24 rear; 5.50x16 front.

Brakes: Two Lambert brakes, foot operated either individually or simultaneously.

Speeds: 1.71, 3.1, 4.0 and 8.4 mph; reverse 1.26 mph.

Shipping Weight: 2200 lbs.

Dimensions: Wheelbase $76\frac{1}{2}$ "; height overall 62"; width overall 61"; rear wheel tread, min. 50", max. 58"; cultivating clearance 23"; turning radius 8'.

Power Take-Off: (Standard) $1\frac{1}{2}$ " ASAE 6-spline shaft; on center line of tractor.

Pulley: 9x6 $\frac{1}{2}$ ", 1360 rated rpm.

Lubrication: Crankcase capacity 4 qts.; capacity each final drive housing 6 qts.

Hydraulic Lift: Pesco pump; $4\frac{1}{2}$ gpm delivery; operating pressure 0 to 1500 psi; reservoir oil capacity 2 qts. Inside diameter of cylinder optional; length of stroke optional; max. piston force, up to 10,000 lbs.; both push and pull variable stroke control; optional cylinder length between pin centers; pin connection on mounted end of cylinder.

Love Tractor, Inc., Eau Claire, Mich.

Love Model F-51

Capacity: Three 14" plows.

Performance: Not yet tested at Nebraska.

Engine: Ford Model 1950, L-head, 6 cylinders vertical, 3.3 x 4.4 "—2000 rated rpm, displacement 226 cu. in., 80 rated hp at 2400 rpm.

Service Data: Auto-Lite 14 mm spark plugs, part no. A-5.

Accessories: Ford generator standard equip.; National battery standard equip.; Ford carburetor; Donaldson air cleaner; Purolator oil filter; Borg & Beck 2-piece clutch, part no. 9A7; McCord radiator core; thermostat standard equip.; fuel tank capacity 18 gals.; Motor Wheel front wheels; own rear wheels; Timken front wheel and rear axle bearings.

Tires: 13x24 rear; 6.00x16 front.

Brakes: Three Wagner brakes, foot operated either individually or simultaneously.

Speeds: 2.0, 3.5, 6.4, 10.3 and 15.2 mph; reverse 2.0 mph.

Shipping Weight: 3780 lbs.

Dimensions: Wheelbase 80"; height overall $66\frac{1}{2}$ "; width overall, min. 54", max. 78"; rear wheel tread, min. 57", max. 77"; cultivating clearance $21\frac{1}{2}$ "; turning radius 8' 3".

Power Take-Off: (Optional) $1\frac{1}{2}$ " ASAE 6-spline shaft; 550, 290 and 750 rpm.