

THE NEWGREN COMPANY

PARTS AND SERVICE BULLETIN

NO. 3

DATE May 6, 1947

SUBJECT: HYDRAULIC LINKAGE SYSTEMS
(Pressure Adjustments)

TO ALL NEWGREN DISTRIBUTORS:

There have been several occasions where hydraulic lines or cylinders have been blown through extremely high pressures being developed. The hydraulic valve used in the NEWGREN linkage system is thoroughly checked and tested at the factory. However, through shipping and improper field installation, damaging high pressures have been built up.

To eliminate any further damage due to excessive high pressures we strongly feel each hydraulic linkage system should be pressure tested before being demonstrated or put to use. This can be done by removing hose #1085 at front of cylinder and attaching pressure gauge. Then adjust pressures by set screw in block #1200 and end of spring rod attached to valve (see diagram attached). Adjusting screw out, decreases pressure; adjusting screw in, increases pressure.

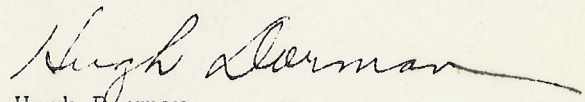
If distributor or dealer does not have a pressure gauge these are available from the NEWGREN Company for \$10.00 net.

Jeep Motor Speeds

for setting pressures

<u>Idle</u>	<u>1750 RPM or Governor 4 notch</u>	<u>Top Speed</u>
800 to 900 lbs.	1100 to 1200 lbs.	1800 lbs. maximum

Yours very truly,


Hugh Dorman
Sales Department

HD:EMG

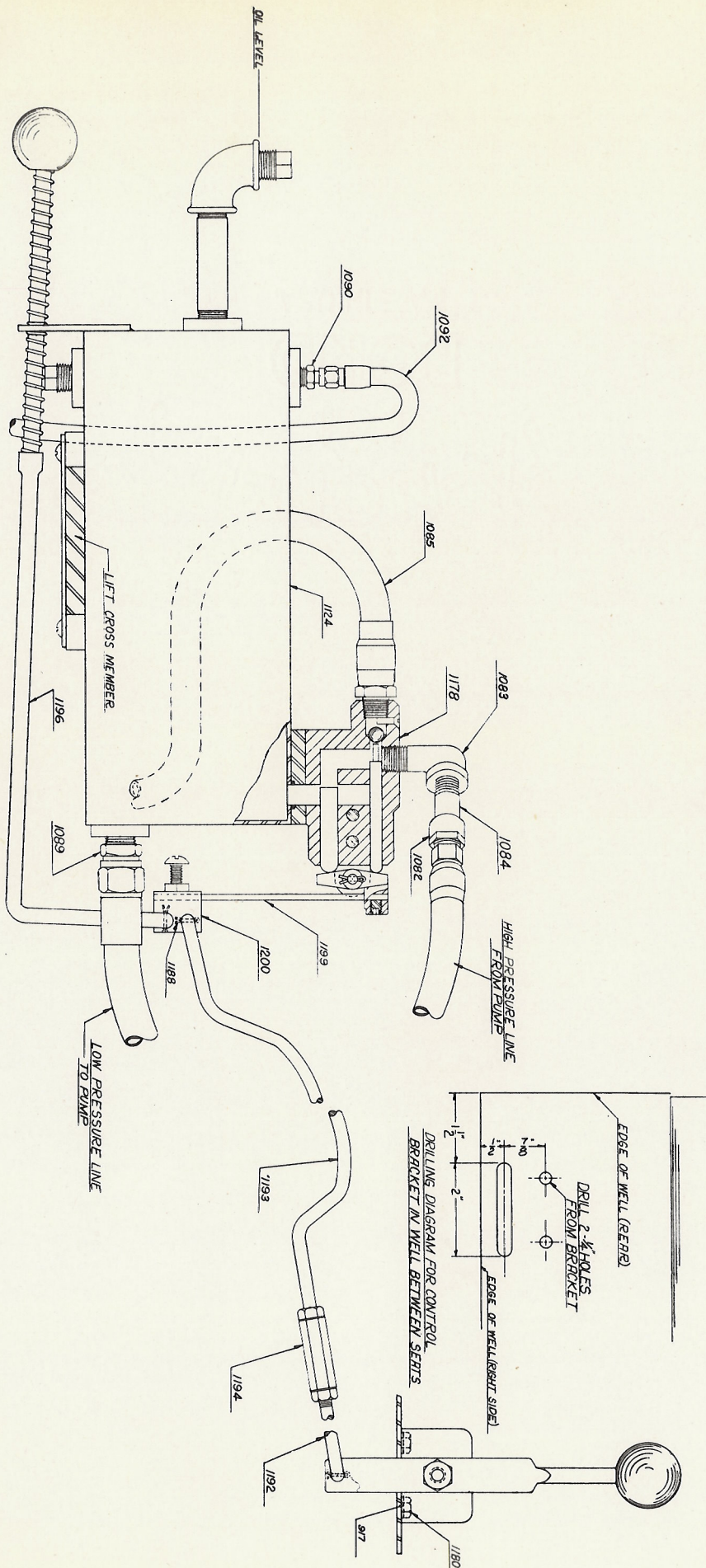


DIAGRAM NO. 4